

# MAINE'S EXPANDING INCLUSIVE OPPORTUNITIES (MEIO)

## EARLY CHILDHOOD SETTINGS INCLUSION TOOLKIT

### REFLECTION WORKSHEET

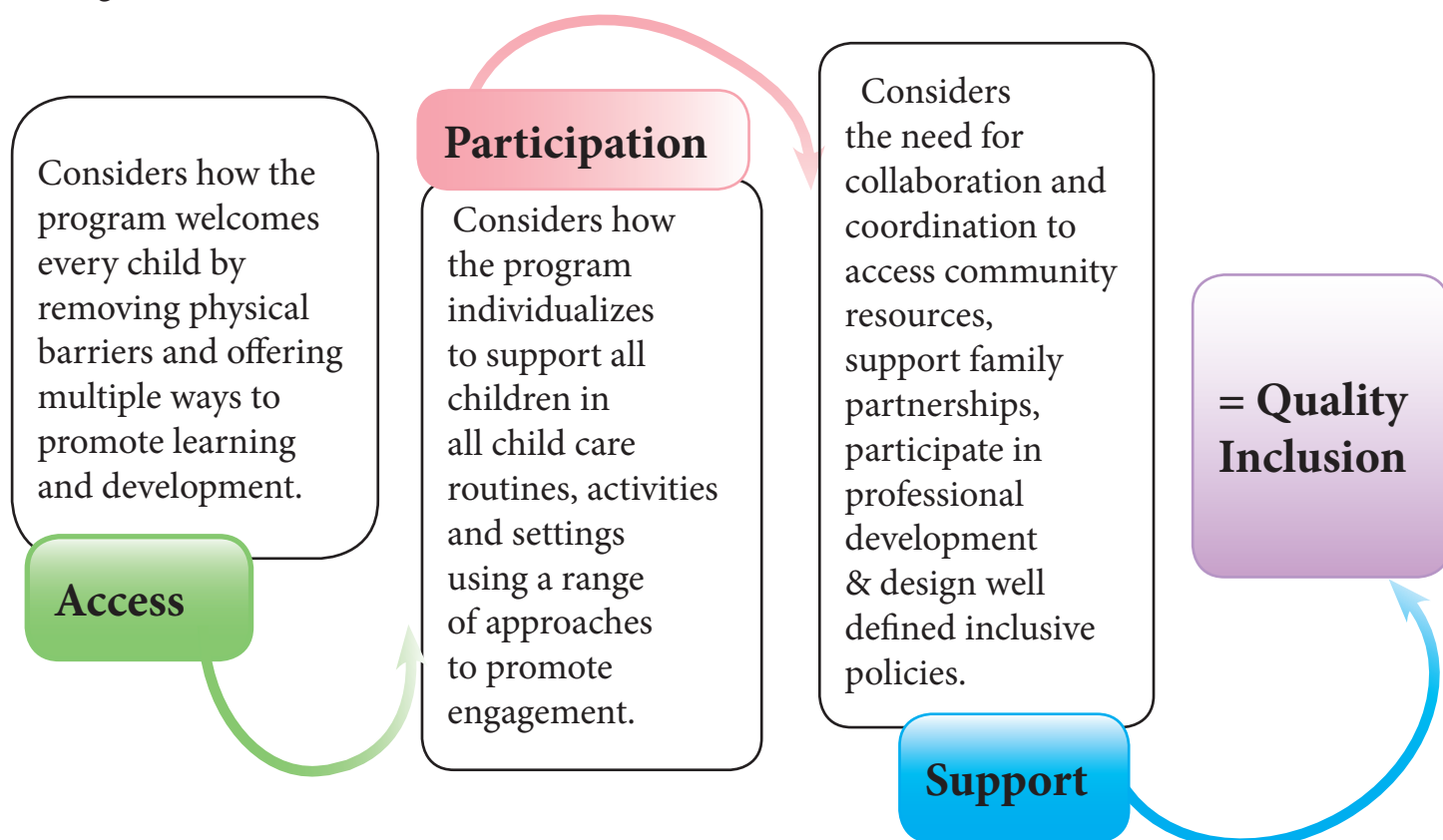
---

The MEIO toolkit provides basic information about high quality inclusive settings for young children and their families. These resources are useful for individuals thinking about starting a program as well as for staff currently working in care and education settings.

The toolkit was developed to be consistent with the Early Childhood Inclusion Joint Position Statement of the Division of Early Childhood (DEC) and the National Association for the Education of Young Children (NAEYC) and provides information and resources based on the defining features of access, participation and support to identify high quality inclusive programs and services (see below).

The worksheet provides a tool for your use as you review, think and talk about the information and plan next steps.

To access the toolkit, please visit [Maine's Expanding Inclusive Opportunities \(MEIO\) Early Childhood Settings Inclusion Toolkit website](http://umaine.edu/expandinclusiveopp/ec-settings-inclusion-toolkit/) at <http://umaine.edu/expandinclusiveopp/ec-settings-inclusion-toolkit/>.



Maine's Expanding Inclusive Opportunities (MEIO) Initiative was established through a federal interagency inclusion initiative and sponsored at the state level by the Maine Department of Health and Human Services, Early Childhood Division; the Maine Department of Education, Child Development Services; and the University of Maine Center for Community Inclusion and Disability Studies. Support for the update and maintenance of the MEIO Early Childhood Settings Inclusion Toolkit is provided by the University of Maine Center for Community Inclusion and Disability Studies with funding from the U.S. Department of Health and Human Services, Administration on Intellectual and Developmental Disabilities (Grant No. 90DD0005).

MEIO Toolkit reviewed/completed by: \_\_\_\_\_ Date: \_\_\_\_\_

What did you learn and want to remember?

What did you read about or see that matches your program?

What did you read about or see that you would like to use, learn more about or try in your program?

Think about the defining features of inclusion and select an idea to try out or a resource to explore further. Complete your plan below:

**Activity to try:**

**When:**

**Who:**

**How:**

*Finally, think about and answer these two questions:*

How does this activity increase your program's inclusive practices?

Which defining feature (access, participation or support) is strengthened as a result?

Access

Participation

Support